



Every Letter is a Jewel

(U.S. and Canadian residents: [John Neal Bookseller](#) has most of these supplies. In Canada, please check [Kensington Art Supply](#).)

SUPPLY LIST—DAY ONE

WRITING TOOLS

- Any kind of pointed nib and a straight holder (will be used for writing and retouching)
- Your favorite calligraphy pens/tools
- 1 fine point black marker like Pigma Micron in Size 01 or a Sharpie
- Pencil
- White gel pen (your favorite brand—could also have some colors if you prefer)
- Another option for white: a white paint pen (Uni Posca is my favorite) in an extra fine, fine, or bullet tip

INKS AND PAINTS

- Small bottle each of black sumi and walnut ink, plus cups for ink
- Small bottle of distilled water (to dilute sumi if necessary)
- Jar of Dr. Martin's or Winsor & Newton Bleedproof White or small tube of white gouache and cup to mix

PAPER

- Practice paper with some tooth, preferably 11" x 17" or 12" x 18" or a 14" x 17" pad. Something that takes wet media. [Strathmore Drawing 400 Series](#) is nice practice paper and takes ink well.
- 1 sheet of 22" x 30" Arches Text Wove OR if you can't get this, any hot press watercolor paper is fine. You can try cold press, too.
- 1 sheet of 22" x 30" Arches Black Cover OR Artagain Black OR Rives BFK Black. Whatever black paper you choose has to hold up to gouache. You don't want to use something too thin, like Canson Mi-Tientes, because it will buckle when you apply watercolor.

OTHER SUPPLIES

- A few of your favorite colored pencils or pastel pencils
- A few sheets of tracing paper
- White rubber eraser or kneaded eraser
- A black eraser is nice if you have it, but there is no need to purchase one if you don't
- Roll of 1" drafting tape or masking tape
- Ruler
- Water containers
- Roll of paper towels

(continued on page 2)



(continued from page 1)

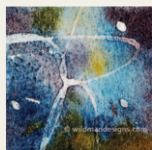


Figure 1

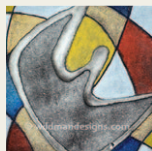


Figure 2

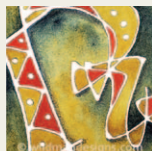


Figure 3

PLEASE NOTE: If you are NOT planning to take the Day 2 class, then please ignore the resist options here. We will write with some of them on Day 1, but color will not be added until Day 2.

RESIST WRITING OPTIONS (You may choose one or all three.)

NOTE: The acrylic gesso option will give you the ability to write with both the Finesline and larger-tipped applicators. If you choose the gesso option, there is no need to buy the Golden High-Flow. Both the acrylic gesso and acrylic paint remain on the paper.

OPTION 1

- A [Finesline Applicator](#) (preferred size: 20 gauge/.5mm — blue tip)
If you want to try some very delicate writing (see Figure 1), you will want to use the Finesline Applicator filled with the acrylic gesso mixture.
- OR [1 inexpensive applicator bottle with a pointed tip and cap](#) if you'd like to try some heavier writing (see Figure 2)—something that gives about 1/8" or larger of a line.
- Small bottle of [Liquitex Liquid Acrylic White Gesso](#) and a small bottle of [Liquitex Acrylic Matte or Gloss Medium](#)

OPTION 2

- 1 small bottle (30 ml/1 oz.) of [White Golden High-Flow Acrylic](#).
- [Finesline Applicator tip](#) to screw directly onto the High-Flow bottles.

OPTION 3

Masking fluid is another type of resist that you remove from the paper once it's dry. (See Figure 3.)

- [Masking Fluid](#) (Pebeo is a good brand) either in an applicator or for use with your writing tools. If you want to use masking fluid with your writing tools, then do not purchase the applicator.
[Finesline Masking Fluid Applicator](#)